

Installation Instructions

安裝說明書

REAR TOW HOOK

後拖車勾

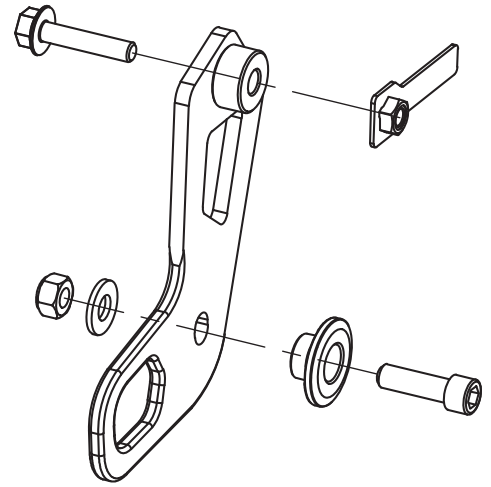
#Q0836

Application 適用車型

SUZUKI JIMNY JB64/74

Components 內含配件

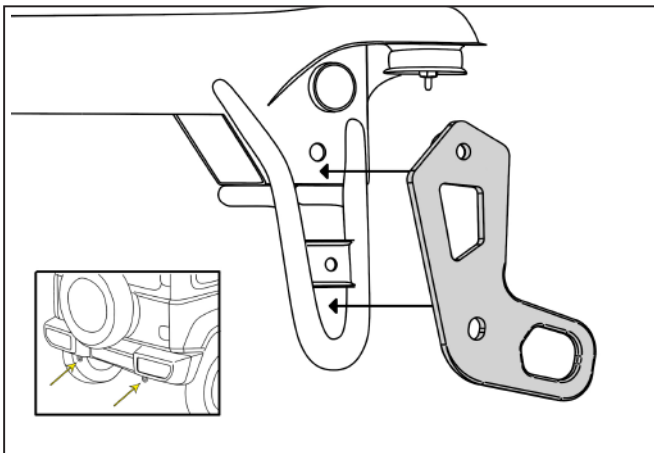
- ① Tow hook 拖車勾..... 1pcs
- ② Bolt 螺絲 (M12x1.75x40)..... 1pcs
- ③ Nut 螺帽 (M12x1.75-19x12)..... 1pcs
- ④ Spacer 墊片..... 1pcs
- ⑤ Washer 華司 (28x13x3)..... 1pcs
- ⑥ Bolt 螺絲 (M10X1.25X50)..... 2pcs
- ⑦ Nut plate 螺帽鎖片 (M10x1.25)..... 2pcs



Caution 注意事項

- Installation is recommended to be performed by licensed mechanics with necessary tools to ensure safety. Incorrect installation may cause injury, damage to the product or vehicle. 安裝建議由合格的技師及工具執行以確保安全。安裝錯誤可能對人員、產品及車輛造成傷害。
- Note the routing of wires and cables before installation, or please refer to factory manual. 安裝前請事先記下線路的安裝路徑及位置以維持原廠配置。有疑問時請參考原廠手冊。
- Tighten bolts and nuts firmly by using handtools, and with specified torque if mentioned. 安裝過程請使用手動工具確實鎖緊螺帽及螺絲。如有特別註明請依照說明指示的扭力上鎖。

Instructions 安裝說明



1. Place the new tow hook onto the factory LH or RH side rear tow hook.

將新的拖車勾桿身置於原廠的左邊或右邊後拖車勾上。

2. Install supplied M10 & M12 hardware to secure the tow hook.

使用附件的M12及M10螺絲配件將拖車勾固定。

Note 提示

※ Recommended Torque Spec 螺絲上鎖扭力值:
M10 : 46Nm / M12 : 80Nm

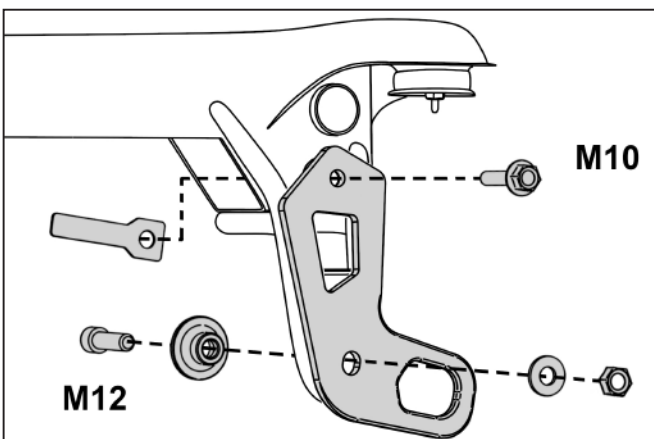


Illustration of installed state 安裝完成示意圖