

Installation Guide

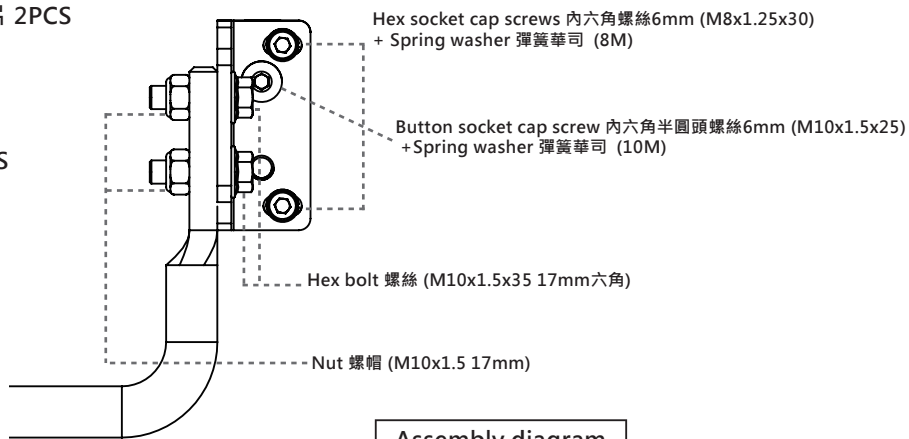
安裝說明書

VEHICLE APPLICATIONS 適用車型 : MITSUBISHI COLT Z30 2002-2012
PART NO. 7970
COLT FACELIFT 2013-ON

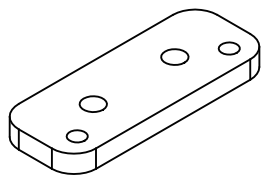
Contents 內含配件

※ Please apply hand tools for installation.
安裝過程請使用手動工具

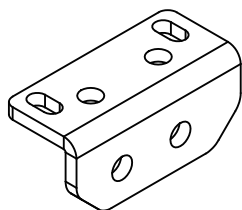
1. Locking plate-inside rear beam 後樑內置鎖片 2PCS
2. L-shaped bracket L型固定片 (R/L)
3. Sway bar 防傾桿 22mm
4. Hex bolt 螺絲 (M10x1.5x35 17mm六角) 4PCS
5. Nut 螺帽 (M10x1.5 17mm) 4PCS
6. Spring washer 彈簧華司 (10M) 2PCS
7. Spring washer 彈簧華司 (8M) 4PCS
8. Hex socket cap screws 內六角螺絲6mm (M8x1.25x30) 4PCS
9. Button socket cap screw 內六角半圓頭螺絲6mm (M10x1.5x25) 2PCS



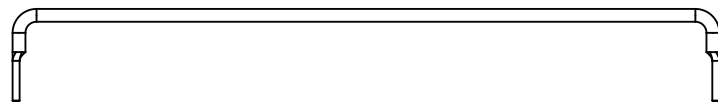
Assembly diagram
組合示意圖



Locking plate-inside rear beam
後樑內置鎖片 2PCS



L-shaped bracket
L型固定片 (R/L)



Sway bar
防傾桿

Installation tips 安裝方法



※ Hint: clean up the dust from rear beam for easier installation.
安裝前請把後樑下端及內部清除塵土，以便安裝